

Town of River Bend Financial Dashboard

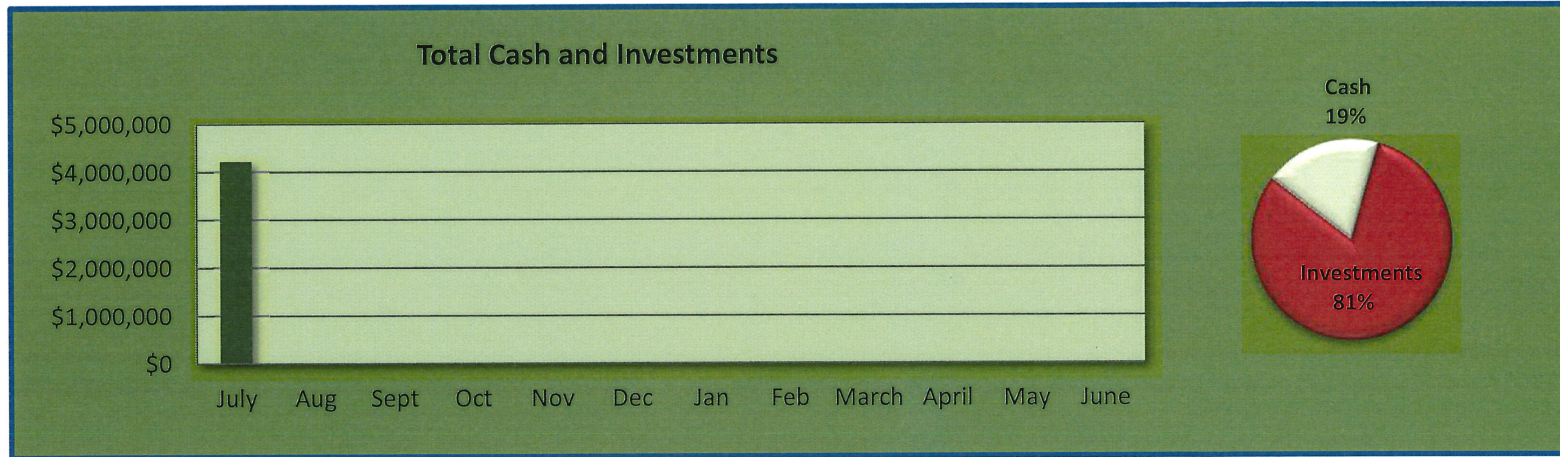


These dashboards are designed to give the user a quick overview of the status of revenues and expenditures in each of the three major funds maintained by the Town. The data that are graphically represented in this dashboard are shown in the summary financial report submitted to the Town Council each month.

All amounts shown reflect the balances at the end of the last month . Data is updated once the month is closed in our accounting system and the Finance Officer and Town Council have had the opportunity to review the information.

Because this is an annual budget, it is important to note that many lines shown on the budget report and graphically represented on this dashboard, will vary, some significantly, from month to month, and in different times of the year. In many instances, capital payments for current fiscal year projects are made early in the fiscal year, the majority of our ad valorem tax receipts occur in the middle of the fiscal year, receipts for hydrant fees come at the beginning of the fiscal year and water and sewer fees are billed bi-monthly.

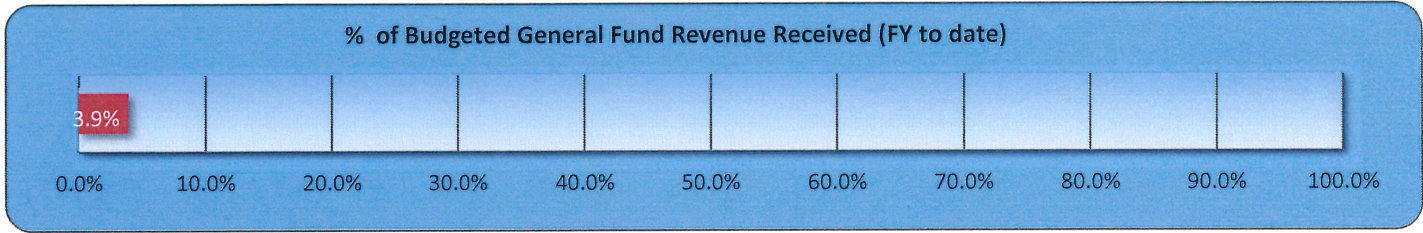
We encourage you to use this dashboard as a quick reference and to review information in the monthly financial report for those areas about which you want more detail. The yellow boxes on the dashboards contain brief explanations of what the graphs and gauges depict. A greater level of detail on each fund is available by reading our annual Budget Document, or through the Finance Officer, Finance Director, and Town Manager.



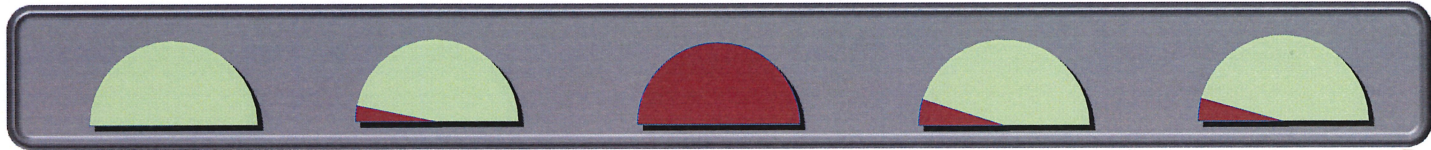
These graphs provides a month-by-month graphical representation of our total cash and investments and how they are held, whether in traditional bank accounts (cash) or invested in accordance with our investment policies (typically with the North Carolina Capital Management Trust). The individual cash balances shown in the Monthly Financial Report are the total funds in each specific accounting fund. In some cases these funds are held in separate investment accounts. Otherwise, the funds are pooled for the sake of investment, but accounted for, in our internal systems, as individual accounts. Interest attributable to each account is allocated based upon the total rate of return of the account(s).

Town of River Bend
Financial Dashboard for Fiscal Year 2022-2023

General Fund - Revenue

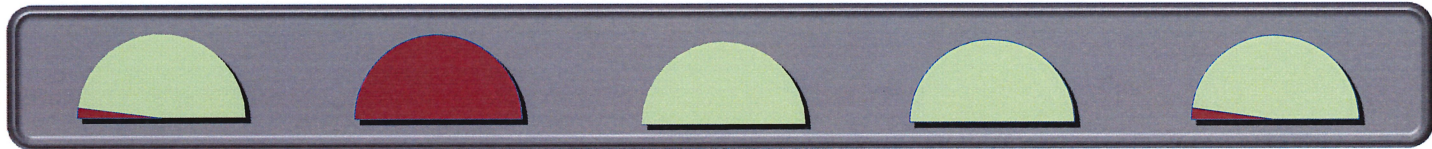


This graph (red bar) shows the percentage of the total budgeted revenue that we have received so far this fiscal year in this fund.



Ad Valorem Taxes 0.0%	Lic & Permits 6.3%	Interest 242.8%	Sales Tax 9.9%	Wildwood Rents 8.7%
--------------------------	-----------------------	--------------------	-------------------	------------------------

These gauges show the percentage of the budgeted revenues (red) received so far this fiscal year in each of the major revenue categories in this fund.



Other Revenue 4.0%	Contributions 245.8%	Powell Bill 0.0%	State Rev. (non-sales) 0.0%	Fees 4.5%
-----------------------	-------------------------	---------------------	--------------------------------	--------------

Ad Valorem taxes begin to come in near the end of the calendar year, and Powell Bill revenue comes in near the beginning of October and January.

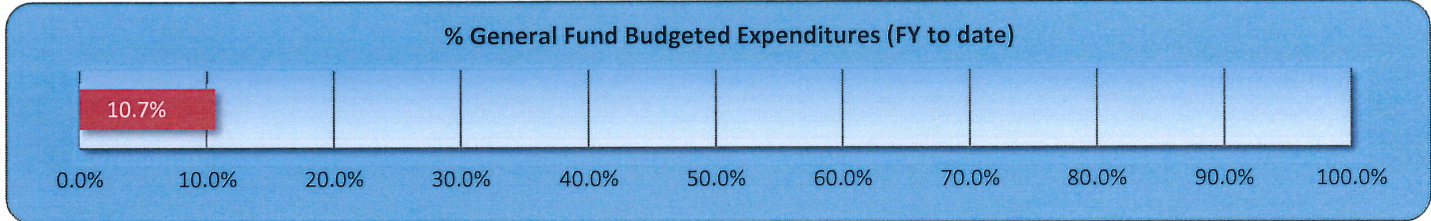


From Capital Res. 45.3%	From Fund Balance 0.0%
----------------------------	---------------------------

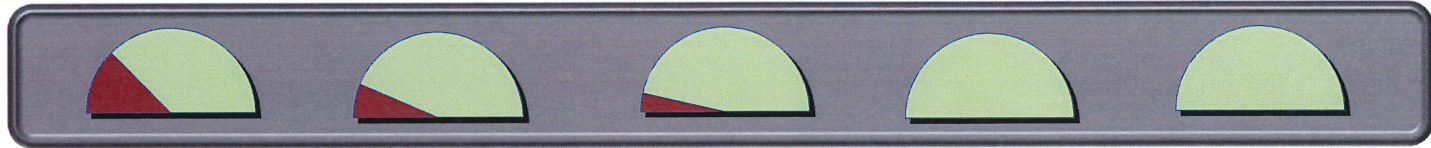
We make the budgeted transfer from Capital Reserve at the beginning of each fiscal year, but only use the appropriated fund balance amount as needed.

Town of River Bend
Financial Dashboard for Fiscal Year 2022-2023

General Fund - Expenditures

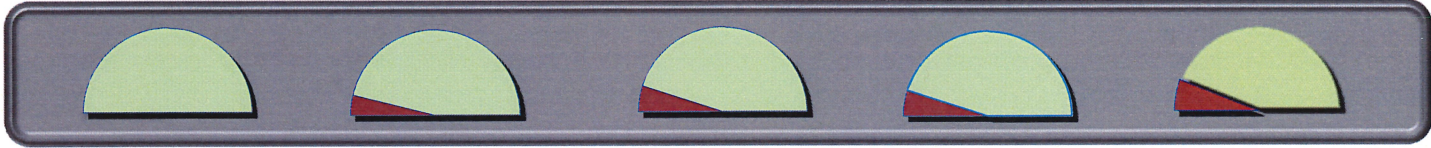


This graph (red bar) shows the percentage of the total budgeted expenditures that we have made so far this fiscal year in this fund.

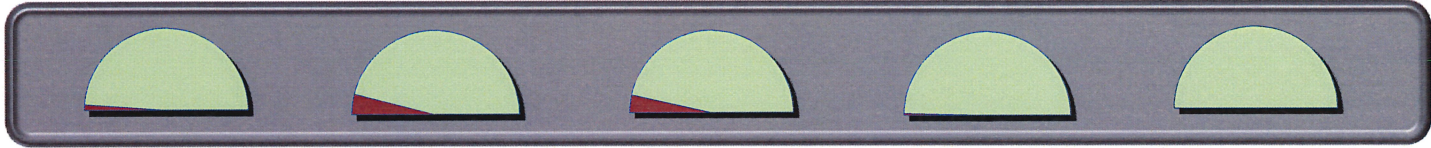


Governing Body 25.2%	Administration 12.9%	Finance 7.2%	Tax Listing 0.0%	Legal Services 0.0%
-------------------------	-------------------------	-----------------	---------------------	------------------------

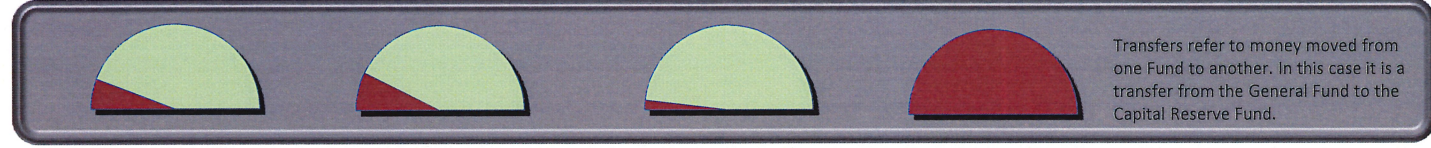
These gauges show the percentage of the budgeted expenditures (red) spent so far this fiscal year in each of the major departments in this fund.



Elections 0.0%	Public Buildings 7.7%	Police 10.0%	Emergency Mgmt 9.9%	Animal Control 11.9%
-------------------	--------------------------	-----------------	------------------------	-------------------------



Street Maintenance 2.3%	Public Works 7.9%	Lf&Limb + Solid Wst 6.9%	Stormwater 0.8%	Wtlnds & Wtrwys 0.0%
----------------------------	----------------------	-----------------------------	--------------------	-------------------------

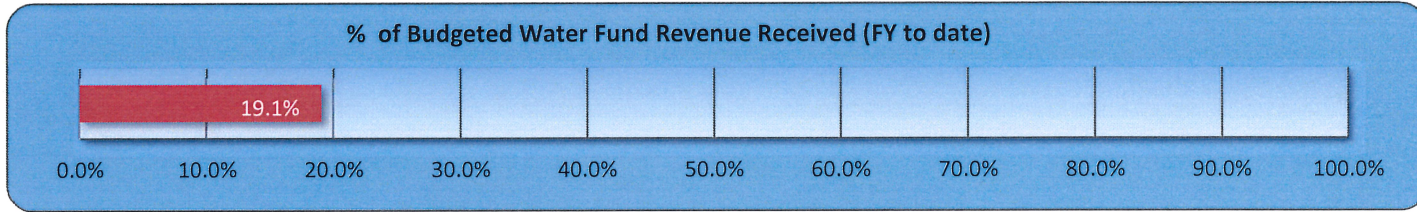


Planning & Zoning 11.6%	Rec & Spec Events 14.7%	Parks 3.8%	Transfers 100.0%
----------------------------	----------------------------	---------------	---------------------

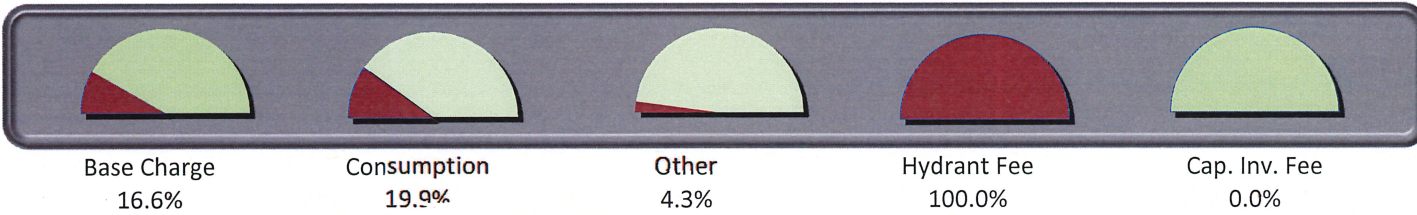
Transfers refer to money moved from one Fund to another. In this case it is a transfer from the General Fund to the Capital Reserve Fund.

Water Fund

r
e
v
e
n
u
e

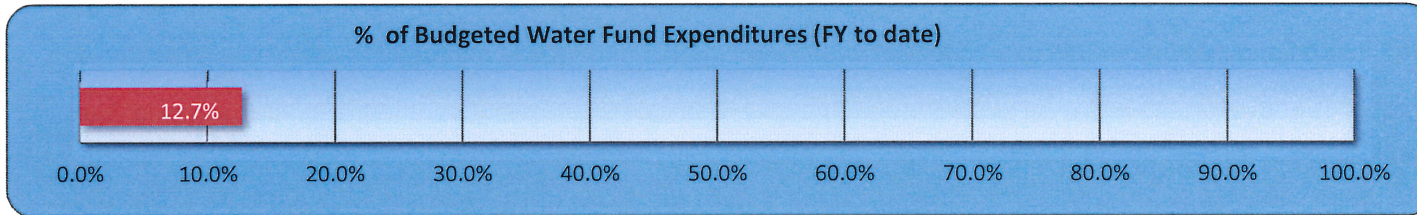


This graph (red bar) shows the percentage of the total budgeted revenue that we have received so far this fiscal year in this fund.

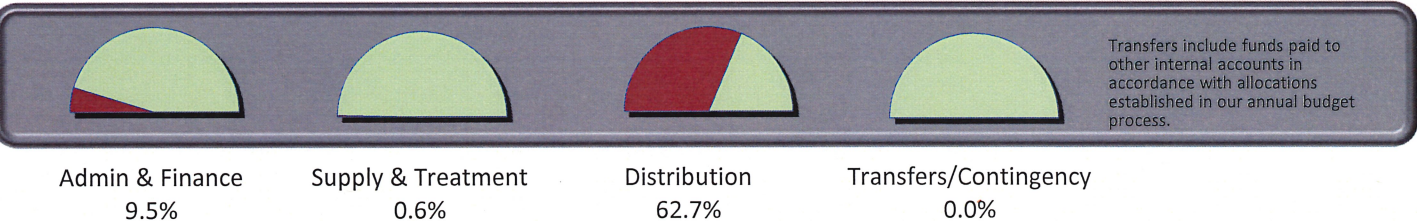


These gauges show the percentage of the budgeted revenues (red) received so far this fiscal year in each of the major revenue lines in this fund.

e
x
p
e
n
s
e
s



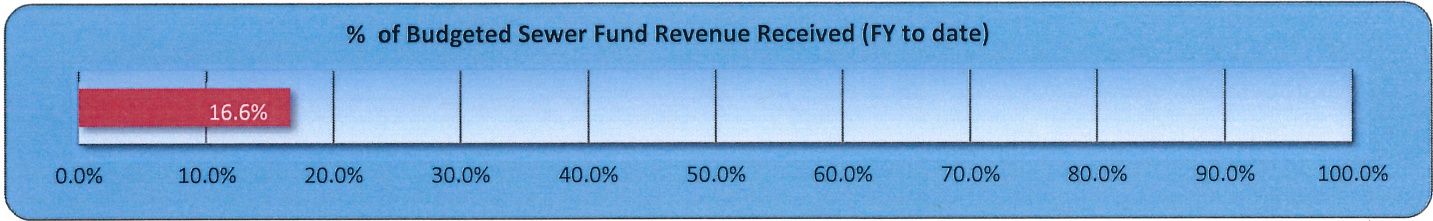
This graph (red bar) shows the percentage of the total budgeted expenditures that we have made so far this fiscal year in this fund.



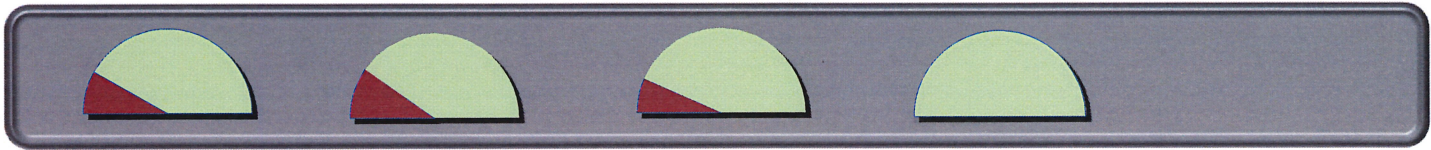
These gauges show the percentage of the budgeted expenditures (red) spent so far this fiscal year in each of the major departments in this fund.

Sewer Fund

r
e
v
e
n
u
e



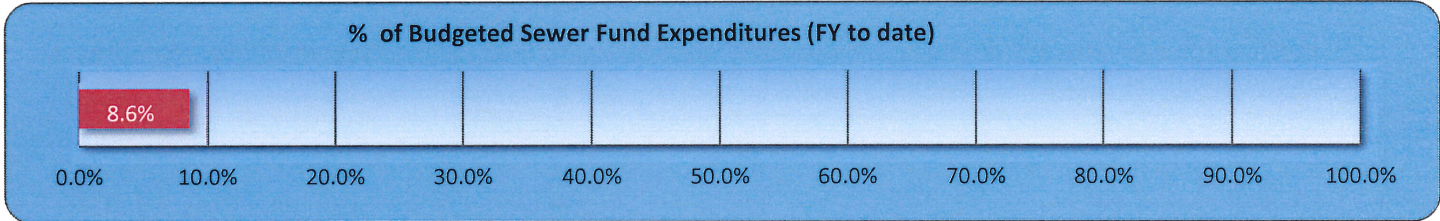
This graph (red bar) shows the percentage of the total budgeted revenue that we have received so far this fiscal year in this fund.



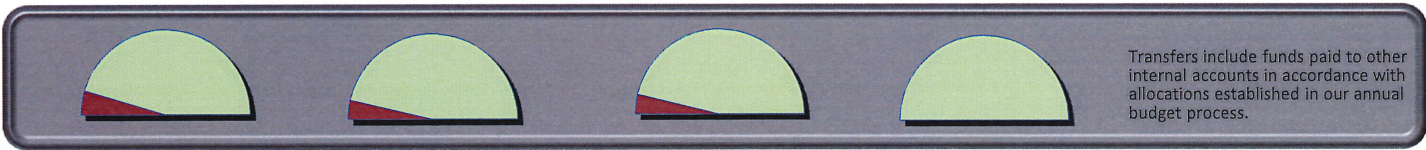
Base Charge 16.5%	Consumption 19.5%	Other 13.3%	Cap. Inv. Fee 0.0%
----------------------	----------------------	----------------	-----------------------

These gauges show the percentage of the budgeted revenues (red) received so far this fiscal year in each of the major revenue lines in this fund.

e
x
p
e
n
s
e
s



This graph (red bar) shows the percentage of the total budgeted expenditures that we have made so far this fiscal year in this fund.



Admin & Finance 9.3%	Collection 7.2%	Treatment 7.4%	Transfers/Contingency 0.0%
-------------------------	--------------------	-------------------	-------------------------------

Transfers include funds paid to other internal accounts in accordance with allocations established in our annual budget process.

These gauges show the percentage of the budgeted expenditures (red) spent so far this fiscal year in each of the major departments in this fund.